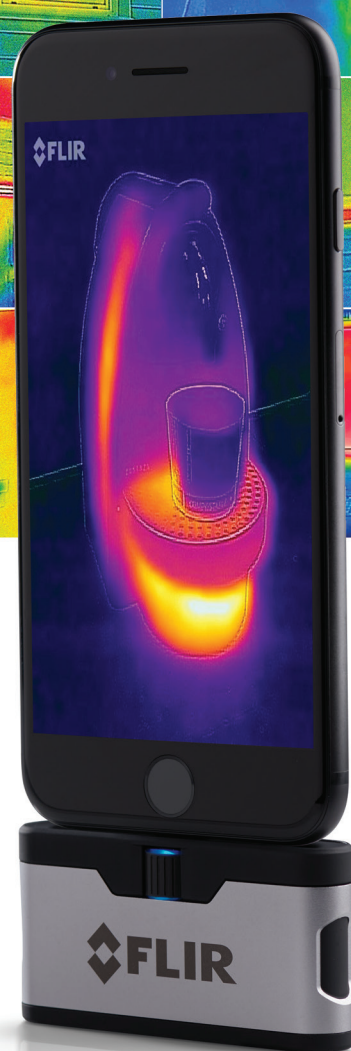


FOR HOME. FOR FUN. **FOR EVERYTHING**

From DIY projects to exploring the great outdoors,
FLIR ONE® is the perfect way to enhance any situation.

Features:

- Thermal and Visible cameras
- MSX™
- OneFit™ Adjustable Connector
- Enhanced FLIR ONE App
- Charges via Phone Battery



FLIR *ONE*®

General

Certifications	MFi (iOS version), RoHS, CE/FCC, CEC-BC, EN61233
Operating temperature	0 °C – 35 °C, battery charging 0 °C – 30 °C
Non-operating temperature	-20 °C – 60 °C
Size	67mmW x34mm H x14mm D
Weight	34.5g
Mechanical shock	Drop from 1.5m

Video

Thermal and visual cameras with MSX	
Thermal sensor	Pixel size 17um (Con), 8 – 14 um spectral range
Thermal resolution	80x60
Visual resolution	1440x1080
HFOV / VFOV	50° ± 1° / 38° ± 1° (Con)
Frame rate	8.7Hz
Focus	Fixed 15cm – Infinity

Radiometry

Scene dynamic range	-20 °C – 120 °C
Accuracy	±3°C or ±5%, typical Percent of the difference between ambient and scene temperature. Applicable 60s after start-up when the unit is within 15 °C – 35 °C and the scene is within 5 °C – 120 °C.
Thermal sensitivity (MRDT)	150mK
Emissivity settings	Matte: 95%, Semi-Matte: 80%, Semi-Glossy: 60%, Glossy: 30% Reflected background temperature is 22°C
Shutter	Automatic/Manual

Power

Battery life	1h
Battery charge time	40min

Interfaces

Video	Male Lightning (iOS), Male micro USB-C (Android)
Charging	Female micro USB-C (5V/1A)

App

Video and still image display/capture	Saved as 1440x1080
File formats	Still images – radiometric jpeg Video – MPEG-4 (file format MOV (iOS), MP4 (Android))
Capture modes	Video, Still image, Time lapse and Panorama
Palettes	Gray (white hot), Hottest, Coldest, Iron, Rainbow, Contrast, Arctic, Lava and Wheel.
Spot meter	Off / °C / °F. Resolution 0.1°C / 0.1°F
Adjustable MSX distance	0.3m – Infinity
Battery charge monitor	0 – 100%